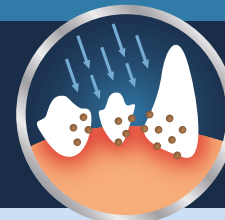




**Easy to Use Home Dental Maintenance**  
 Optimal Oral Health - Controls Gingivitis, Plaque, Tartar and Halitosis  
 Great Compliance - No Brush and Flavor Free



## Introduction

Periodontal disease is the most prevalent and possibly the most underdiagnosed and undertreated health disease in dogs and cats<sup>1</sup>.

Over 80% of dogs that are 2 years of age and over suffer from active dental disease. Up to 90% of cats four years of age and older suffer from some form of dental disease.



Have some degree of dental disease by the age of two

Periodontal disease can be divided in two stages. Gingivitis, the first stage observed, can progress to periodontitis (the second stage) if not managed properly. The mouth harbors bacteria that multiply, forming a layer of plaque and eventually organizes into a biofilm. Plaque is the biofilm that sticks to teeth and is composed of bacteria and chemicals from saliva and food. While some plaque is removed by the dog's chewing and tongue movements, most of it sticks to the teeth and mineralizes to tartar. Plaque contacted with gums can cause gingivitis and trigger the development of periodontal disease.

Periodontal disease can lead not only to many local (oronasal fistulas, osteomyelitis...) and systemic (heart, kidney, liver...) problems, but can negatively impact animal welfare too.

### Signs of periodontal disease can include:

Physical signs	Behavioral signs
<ul style="list-style-type: none"> <li>· Halitosis or bad breath</li> <li>· Discolored teeth</li> <li>· Gingival erythema or edema</li> <li>· Gingival bleeding, ulceration and/or recession</li> <li>· Excessive drooling and/or purulent discharge</li> <li>· Dental tartar</li> </ul>	<ul style="list-style-type: none"> <li>· Abnormal or one-sided chewing</li> <li>· Rubbing face or pawing at face</li> <li>· Reduced appetite</li> <li>· Discomfort around the mouth</li> <li>· Sudden irritability</li> <li>· Aggressive behavior</li> </ul>

**Since plaque can return to the surface of teeth as soon as 24 hours after a professional cleaning, home care is crucial for oral health maintenance.**

Home care can be divided in passive or active actions, both of which are effective if consistently done. Active periodontal care requires owner participation, and to increase compliance, it's important that products are easy to apply and highly accepted for animals. The best way to prevent the build-up of tartar is via daily tooth brushing, but brushing can be difficult for both the pet and the owner. Direct application of a product designed to disinfect, clean, neutralize odors and reduce plaque and tartar is a good way to prevent dental disease and maintain optimal oral health.



4 fl. oz. (118 ml)  
2 fl. oz. (59 ml)

## Characteristics

- Complete protection against plaque, tartar, gingivitis, stomatitis, and halitosis.
- Antiseptic action against periodontal pathogens.
- Daily use helps to prevent plaque.
- Stimulates gum healing.
- Quickly neutralizes mouth odor without masking it.
- Helps to maintain optimal oral health.
- Two presentations to fulfill all needs and increase compliance:
  - Spray - Small dose needed.
  - Gel - Mucoadhesive properties for a prolonged action.
- Great compliance:
  - Highly accepted flavor free.
  - Neutral pH.
  - Easy application - Can be used with or without brushing.
- Does not stain enamel.
- Long 5-years shelf life.

## Composition

Zn gluconate	1.5 %
Taurine	0.5 %

### Also contains:

**CLUNIA EasyDent Spray:** deionized water, methylparaben, propylparaben, FD&C Blue 1.

**CLUNIA EasyDent Gel:** deionized water, **carboxymethylcellulose**, methylparaben, propylparaben, FD&C Blue 1.

## Mechanism of Action

- Zinc is an essential factor in more than 300 enzymatic reactions, many of which are involved in the regeneration of the extracellular matrix, healing processes, repair of connective tissue, inflammation, and cellular growth. In the oral cavity, Zinc, due to its role in collagen production, allows gingival tissue to recover, effectively reducing inflammation.
- Zinc gluconate penetrates plaque and oxidizes anaerobic bacteria, helping to prevent plaque formation.
- Taurine chelates sulfur compounds and volatile fatty acids that produce halitosis.
- Carboxymethylcellulose is a mucoadhesive that allows CLUNIA EasyDent Gel a longer contact time with the surfaces of the oral cavity.



## Recommended Use

- To regularly clean and refresh the oral cavity and teeth for optimal oral health.
- Before and after professional dental procedures to extend its benefits.
- To control halitosis from teeth and gums.
- Gingivitis.
- Periodontal problems.
- Oral wounds and lacerations: helps in gingival healing.
- Helps maintain oral and dental health, ensuring the pet can chew properly throughout its life, minimizing secondary health problems.

## Directions for Use

For optimal results, repeat daily and avoid offering water or food 30 minutes before and after application.

### CLUNIA EasyDent Spray

- For animals up to 10 lbs, apply 1 spray on each side of the upper gums.
- For animals 10 lbs and over, apply 2 sprays on each side of the upper gums and an extra spray on the front upper teeth.

### CLUNIA EasyDent Gel

- For animals up to 20 lbs, apply 1 pea size drop (about 0.5 ml) on each side of the upper gums.
- For medium and large dogs, and horses, increase dose as needed.
- The natural cleansing action of the mouth will distribute the gel to the most remote areas.
- Most animals will accept use of the built-in applicator.
- To maximize acceptance in smaller animals, deposit gel on the index finger, swab or toothbrush and apply to the gums.

## Cautions

For animal and oral use only. Store the container tightly closed, in a cool, dry place, protected from sunlight and out of reach of children and animals. Store at room temperature. Protect from freezing.

## References

1. Niemiec, B. et al. (2020) "World Small Animal Veterinary Association Global Dental Guidelines," Journal of Small Animal Practice, 61(7). Available at: <https://doi.org/10.1111/jsap.13132>. <https://onlinelibrary.wiley.com/doi/epdf/10.1111/jsap.13132>